

July 2009 Newsletter

President

Mark Passerello

Past President

Dan Binder

Director Emeritus

José Cueto

1st Vice President

Ken Schultz

2nd Vice President

Zack Clayton

1 year Director

Jack Smith

2 year Director

Wendy Fissel

3 year Directors

Denny Sackett

Tom Holcomb

Treasurer

Richard Gurevitz

Secretary

Sandy

Schoenfeld

Librarian

John Young

Web Master

Ed McCracken

Newsletter Editor

Richard Uhrick

Education

Tom Holcomb

“A Pinch of this....”

...Can't see the forest for the trees...,

Term of the month: FOLIAGE PAD

Foliage pad: Cloud-shaped foliage mass on a branch . Foliage pads are shaped by training the individual branches with bonsai shears and bonsai wire.

Come one come all, go forth and multiply. Or as the Bard once said, “When Birnam Wood be come to Dunsinane....” Join us this month as José Cueto leads us in the ways of creating our own Birnam Woods. (Or Sherwood Forest if you prefer.) José will present a slide show of methods, concepts, and styles; then he will offer two demonstrations of group tree styling. These plantings will be go up for raffle in the coming months.

For those of you who have not received your membership cards yet, please check with John Young at the meeting. If he does not have it please email me at ruhrick@otterbein.edu so that I may compile a list in order to do another run. If you joined or renewed your membership after the first of the year, this probably includes you. I will try to get the cards to John for the August Meeting. Unfortunately, work and family events will keep me away from the next two meetings. However, I know there will be many trees finding new homes after this month's demos as you all run out to work on your own group plantings.

Bonsai=Perseverance



Rich Uhrick



This Month's Program—Group Planting with José Cueto

Thanks for all your help!

I was pleased with the participation and how things came together for our Show on June 20. My thanks to the vendors; John and Sherrie Brannon, Jeff Carr, Tom Holcomb and Pat Keiffer and Ken and Patti Huth. (Jeff and Ken for their demos) Dan and Sara Binder– the pipe and drape made our show look even more professional and I know running around are not easy. Jack Smith thanks for returning the Shoji screens and thanks to Keith Stevens/Dawes for lending them to us. Tracy I really liked your Taxus -Nice job, it was my personal favorite. Denny Sackett loved the chili. John – good guard service. Doc for sitting the Club table. And most of all to Linda for letting me run myself ragged. And I have not forgotten, my thanks to Erin and Brandon of the FPC staff who helped set up the tables and cleaned up after we left. They were very helpful with all our announcements too.

The list goes on and on, it takes a lot of hands to make a show a success. So thanks also to Mike Thornhill, Sandy and Ken Schoenfeld (painted the mame' case), Deena Harris, Ben William, Sara Nguyen, Mark Passerrello, Monica Brown, Stefanie Pace, Zack Clayton, Ed McCracken, Jerry and Tracy Freeland, Thad Bell, and Jose' Cueto.



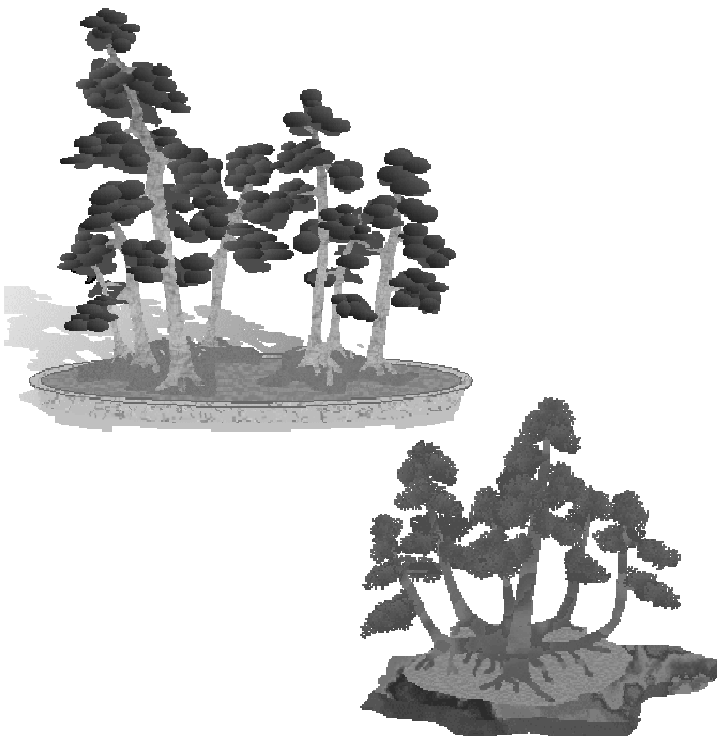
June 21 at 2 PM Group Planting with José Cueto

José will be demonstrating many aspects of Group plantings. He will have a multimedia presentation on the concepts involved and two, THAT'S RIGHT TWO, different demonstrations. One will be using Ficus (probably "Too Little") and the other with several Shimpaku. This should be a good opportunity for those of you who are looking to create your first "Forest" or "Clump" styled bonsai to see how to go about it. José is an excellent artist and instructor. Besides, you want to know how these bonsai came about don't you? Then you will know all about them when they are auctioned or raffled off at the picnic in September.

UPCOMING PROGRAMS:

AUGUST: Tropical Tune Up: Zack Clayton and Sandy Schoenfeld will lead a BYOT session so bring in a plant or three- from the tropical side of your bonsai collection. Cultivation tips, styling and grooming help will be available

SEPTEMBER: Pot Luck/Picnic at Franklin Park: Bring a dish to share. Bring trees, pots and other bonsai related material to sell, trade, or money to buy. (10% of sales is donated to support the club). Selected club owned stock or pottery will be raffled, or offered at auction. Fun for the whole family.



AND NOW A WORD FROM OUR PRESIDENT....

Mark is on Vacation this month and will return to guide us soon.

Mark Passerello



Sale items and Society Shirts

As you know, we have lost our storage space in the conservatory so that any items that we sell have to be brought to the meetings. To aid us in providing you with items you need it would be extremely beneficial if you e-mailed us with your wish list at least 2 days before our meetings. We have a variety of pots, wire, some tools and a selection of Club shirts, hats and aprons. Currently we have a selection of Tee Shirts (tan or white)\$15, Golf Shirts (Lt. Blue, Black or Green)\$24 , short sleeve and long sleeve blue denim and short sleeve and long sleeve black "denim" shirts.(\$21) Sizes in stock range from Small to Extra Large, sorry nothing bigger at this time. (We do have 1-white Tee and 1-long-sleeve denim in 2X – they are \$3 more but I know they will not last.)

A Wild Weekend at Wildwood Gardens BBQ Featuring Suthin Sukosolvisit (or the tree of the month is pines)

Every year when the Board meets to plan our calendar, we determine which bonsai artists may be visiting Ohio, but because our budget is limited, we select only two (this year it is Craig Coussins and Frank Mihalic). Then we talk about making road trips to see those who may be visiting other Ohio locations. Suthin was one and we decided those who were interested could make the trip up to Chardon. Linda and I were able to attend partially because my Mother lives only 17 miles away or about 150 miles from Columbus. You may have noticed the advertisement at the end of our newsletter the past few months.

Suthin now lives in Boston. He came there by way of Singapore, to Los Angeles to Boston. He told us that he worked in a bonsai nursery for seven years before coming to the USA. He said his wife told him he would not be happy unless he was involved in bonsai. He says that he works on one or two trees a day, and that he travels two weekends a month to provide clubs with workshops and demonstrations. On Saturday, June 27, he conducted 3 demonstrations and a workshop; on Sunday, he finished a black pine he started Saturday night and then did two smaller demonstrations and a workshop. You had a choice in the workshops of bringing one of your own trees to work on or buying something. On Saturday, I had brought a tree and on Sunday, I bought one. If you are curious, it was \$120 for Linda and me to attend both days- the food was worth that alone! The BBQ ribs Saturday night were excellent. And the workshops were \$40 each.

It was a sort of conifer weekend for me. Both workshop trees were conifers, a Mugo and a Scotts pine. The Demos were a spruce, a black pine and a Scotts pine. In between a number of small white pines, shimpaku and elms were styled.

The first trees up for a dual demo by Frank Mihalic and Suthin were global blue spruce that they had purchased at a local nursery for the demonstration. During the demo, I learned that the time and way to prune or candle a spruce is to cut the bud in half after it starts to extend. If you take it off all the way, the branch may die, at best it will not do anything for the year.

The next demo featured a very large black pine. This demo went until 8:30 PM and continued at 9 AM the next morning. To say that I learned more about black pines than you can imagine is an understatement. First, he plucked out the old needles, saying that when he did White Pine he cuts the needles, but in both cases, this allowed sun to reach the branch and promotes back budding. He explained that black pines have 3 or 4 different strength buds. The strongest are on the outside, then the next strongest were the next layer down, there being 4 or 5 layers or sizes of buds. The plan is to pinch the first layer in half, to a third then the second layer 10 days later, etc. etc... Then in 10 days, remove the third strongest bud, and then the next stronger, then the strongest. This evens out the strength of the new back buds as they develop.

I asked about using poo balls, specifically on black pines in a pot the size of the large one he used in the demo. He said that first he would space poo balls 4" apart all the way around the pot; two weeks later he would come back and put one in between each of the first, then in another two weeks he would add a row closer to the trees 4" apart. I was astounded. That is a lot of poo. He said he would use half as much on a White pine or the needles would become too large.

The large black pine also gave another opportunity for Suthin to explain the principals of dead wood on a tree. The lower on the tree, the shorter the length of the Jin. He used a torch after carving to smooth the rough new carving so that it looked older. He said he waits a month after removing the bark to use lime



(Continued from page 4)

sulfur.

He explained that only young trees have a pointy top, older trees tops are rounded. While rounded, all the trees I saw that weekend used the scalene triangle form, more or less. Shari and Jin carving pays attention to providing a drip line so that rain was sure to drain from the cut.

He said he would not re-pot any of the trees this late in the year, and he would not re-pot them in zone 5 in the fall. He said that re-potting should be done when the roots are actively growing. He also said that both after styling as we were doing and after re-potting the trees need to be in a semi-shady to shady location for 2 weeks.



During the weekend, Frank Mihalic also styled a number of trees or assisted Suthin with the larger black pine. They used raffia and a branch bender to move a branch on the large black pine. Frank knocked out a number of mame' to shohin sized junipers and pines that were auctioned during the weekend. Auctioned trees went for as little as \$50 up to \$350. They all qualified as bargains!

Suthin said he uses copper wire on conifers and aluminum on tropicals and deciduous trees because it is easier on their bark which is thinner. He said he always cuts the wire off to keep from damaging buds and that because copper is thinner and sets after bending; it is not re-bendable to remove it.

While I focused on the demo material in this article, because Suthin provided the audience a wealth of experience; the workshops were very good too. Frank and Suthin moved from student to student, each person was helped 5 or 6 times.

I saw some spectacular results. Including Shari and Jin, extreme bending, windswept, and semi cascades to name a few. The results were impressive including those who were participating in their first bonsai workshop.

This fall (October), we have arranged for Frank Mihalic to demonstrate his carving skills. If there is interest in doing a workshop, I will see if those arrangements can be made. The Ohio Great Lakes Bonsai Society meets at Wildwood Gardens the 3rd Saturday of each month. Frank is the author of *Bonsai for Children* and is a director on the American Bonsai Society. Frank's father, Tony started Wildwood Gardens in the 1950's and Frank has been practicing bonsai since he was 9. This year Frank is also organizing a trip to Singapore, Japan and Korea, so if you were planning to go "some day".....

Finally, I cannot say enough about the hospitality of Joann, Tony and Frank Mihalic. I always feel welcome there. Tony has a number of gardens and loves to give tours. Joann handles all sales. I know that I will keep the annual BBQ on my calendar.

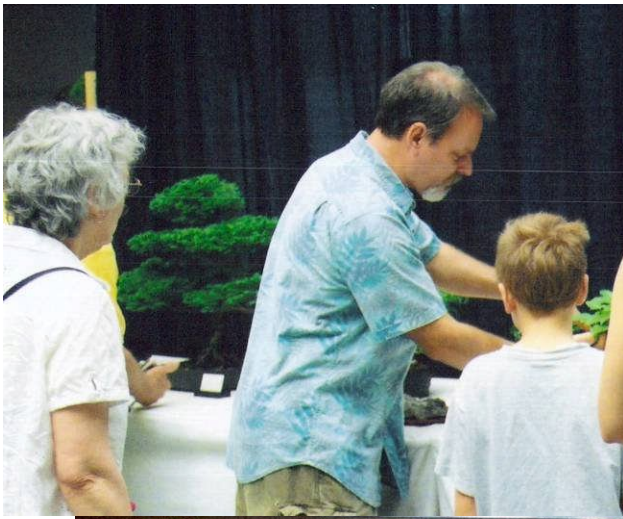


Ken Schultz

The CBS Annual Show...a photo journalistic review.



4 Out of 5 Mudmen agree the show was a success!





I hope you are ready for the exciting experience of working with internationally famous bonsai artist, Craig Coussins. The Columbus Bonsai Society Board is excited to offer you the opportunity to bring one of your trees to Franklin Park Conservatory on Wednesday evening, September 30, 2009 for the unique and exceptional learning experience that only occurs in such an event.

He is the author of many bonsai books. (Bring your copy to have it signed) A few of us had the chance to work with Craig at Dawes and the personal experience takes his books well beyond reading about growing, caring and shaping bonsai. He is also well known for his wiring skill and prowess.

There will be 10 openings for the BYOT workshop @ \$55 per person. We are planning to start at about 5:30 PM. Fifteen Observers will be allowed for a \$10 admission fee. We are planning to provide food and beverages to those present. (Fees are to cover quest artist fee, travel and food)

Sign up will occur at both the July and August meetings. If you are not planning to attend either of these meetings, but are a current club member and wish to participate in this important workshop, please contact me about registration. Only paid fees guarantee your spot.

Craig Coussins has been creating Bonsai since 1973 after seeing a wonderful Bonsai and collection in his native Scotland. He has been at the forefront of Bonsai development in the UK starting and funding the Scottish Bonsai Association in 1978 until he left in 1987. He was a Steering and then committee member of the Federation of British Bonsai Societies in 1983 until 1986. He has since toured the world teaching at clubs and conventions in many countries including America, Canada, South Africa, Australia, New Zealand and throughout Europe.

Craig Coussins has written six best selling Bonsai Books. Bonsai for beginners, Totally Bonsai, Growing Bonsai, Bonsai School, Bonsai Handbook and Bonsai Master class.

Craig has a small collection at his home in Scotland and maintains that with his friend Belgian Bonsai Artist, Peter Foele.



Bio and photo from the Knowledge of Bonsai sponsored blog.

Then just a few weeks later at our October 18th regular meeting we welcome an equally well known artist from an equally well known Bonsai Family, Frank Mihalic. He and his father Tony are even featured in Craig Coussins' books. But they also have books of their own out. Frank will be bringing his expertise in carving to share with us. Anyone who has ever taken a workshop or seen a demo with Frank knows that he is an excellent teacher who truly loves what he is doing.

He and his family own and operate Wildwood Gardens in Chardon, OH.

Watch this newsletter for more information on this event in future issues.

Bio and photo from ichibanbonsai.com

Frank J. Mihalic is one of a few second generation bonsai artists in the United States today. Frank has perfected his craft under the critical eye of his father, Bonsai Master Tony Mihalic. Tony specializes in the Rock and Forest styles of Bonsai known as SAIKEI. Frank specializes in the single tree styles commonly associated with Bonsai in the United States. Frank routinely travels to the Far East to perfect his skills with various world renown Bonsai Masters and Growers. Frank also guides Bonsai tours and buying trips to the far east.



**F
R
A
N
K

M
I
H
A
L
I
C

A
T

C
B
S
:
O
C
T
1
8
T
H**



NOVICE BONSAI INSTRUCTION CLASSES

A series of six in-depth classes to provide wealth of information and hands on learning.

The Columbus Bonsai Society, a nonprofit educational organization dedicated to the Japanese art of miniature trees, will be offering a series of six classes designed to give a firm grounding in the artistic and horticultural aspects of this fascinating hobby. The classes are open to anyone with an interest in bonsai, regardless of previous skill level or experience in any other form of horticulture.

The classes will be specifically geared to introduce the basic concepts of bonsai to those who have had no experience and to reinforce and improve the skills of beginners. The classes are open to all ages, and will consist of class room lecture, demonstrations, and hands on experience.

Registration for the entire series of six classes is open to any member of the Columbus Bonsai Society. Non-members may purchase a \$25 annual membership in the club at the first session. A materials fee of \$10.00 will cover all items needed for the classes.

Class Dates, Locations and Topics are as follows:

Saturday, June 20th 11:00 AM Franklin Park Conservatory, Columbus

Art and Aesthetics - A discussion of the basic styles and learning to identify the principles of good proportion in the development of bonsai. The concept of think into the future and planning form and use of space will be addressed. This session will take place during the Columbus Bonsai Society's annual Show at Franklin Park. Taught by Jose Cueto, a long time bonsai artist and teacher.

Sunday July 19th 12:30-1:45 PM Franklin Park Conservatory, Columbus

Keeping them alive - Bonsai care and maintenance, including watering, fertilizer, dealing with pests, sun exposure and seasonal needs. An examination of tree botany with respect to bonsai (how a tree functions) will be a part of the class.

Sunday, October 18th 12:30-1:45PM Franklin Park Conservatory, Columbus

Shaping Techniques - Specialized pruning, growth regulation, and shape control with wire, weights, and other techniques. A hands on session will teach proper wiring methods.

Sunday, November 15th, 12:30-1:45 PM Franklin Park Conservatory, Columbus

Tools and Tool use - The interesting and specialized tools needed for bonsai and how they are used and cared for. And we will ask the question, "Do we really need them?"

Prior registration for the class series is encouraged. To register, or for further information, contact Tom Holcomb at 614-444-9639 (tholcomb@columbus.rr.com) or Mark Passerello at 614-890-1995 (mpasserr@columbus.rr.com)

C. Tom Holcomb

Education Facilitator

先



From the Nashville Bonsai Society's June 2009 newsletter.

**5 concentric layers of tree cells,
called annular rings.**

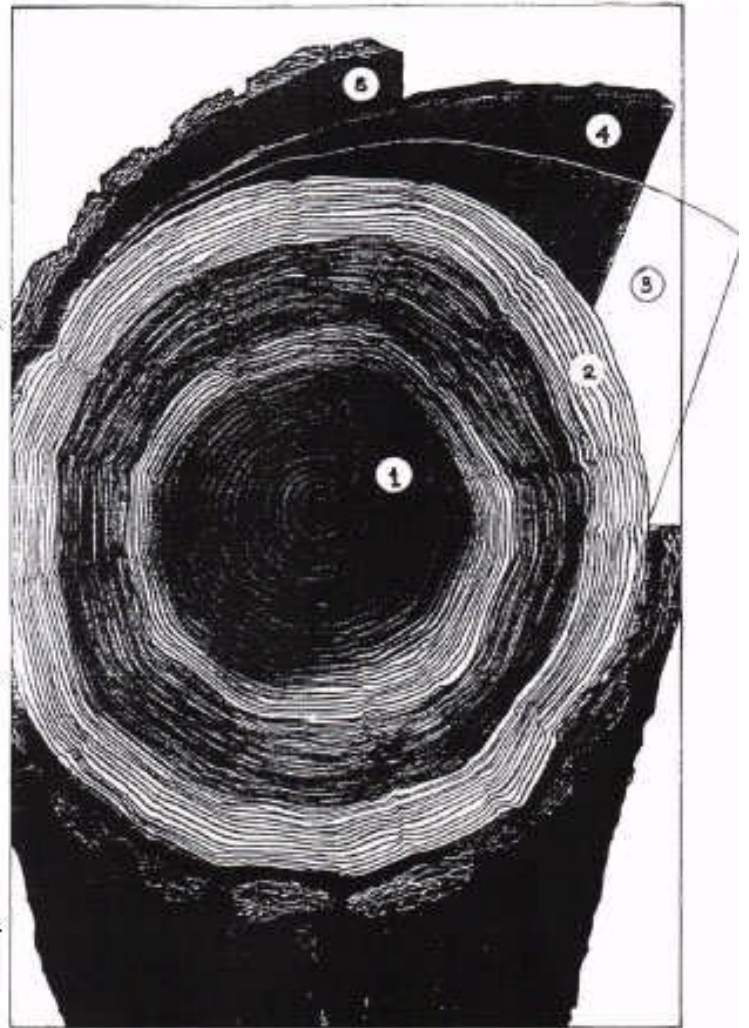
1)Heartwood is comprised of old, dead cells which act as a central support system.

2)Sapwood cells are living cells, which take up water and dissolved minerals from the soil via the root system, up to the leaves. These cells are also called *Xylem* cells and they are a part of the tree's transport system.

3)Cambium cells are the tree's only productive cells. They are responsible for the growth, renewal and healing of the tree's structure.

4)Phloem cells are live cells located on the outer side of the cambium cell layer. They form the soft inner bark layer which transports sugars produced in the leaves, down to all parts of the tree, to be stored in the phloem cells as starches for use by the tree to sustain good health.

5)Bark is formed by dead phloem cells, which create a protective outer layer around the structure of the tree.



From the Circulation Desk of the C.B.S. Library

There are still a few books left to purchase. Also, please check your libraries at home against the list on the website to see if you still have one or more of the items that are missing from our library cabinet.

Thanks,

John Young, Librarian



Columbus Bonsai Society Membership Registration

Name: _____

Address: _____

Phone: (____) _____ -- _____ Date: ____/____/____

Email: _____

Membership: Individual \$25.00 Family \$35.00

Check # _____

P. O. Box 1981

Columbus, Ohio

May your phone number be included in our members list? Y N

4 3 2 1 6 - 1 9 8 1

Would you like to get your newsletter by email? Y N

(email saves the club about \$.74 to \$.90 an issue in printing and mailing.)

IF family membership, please list other members: _____

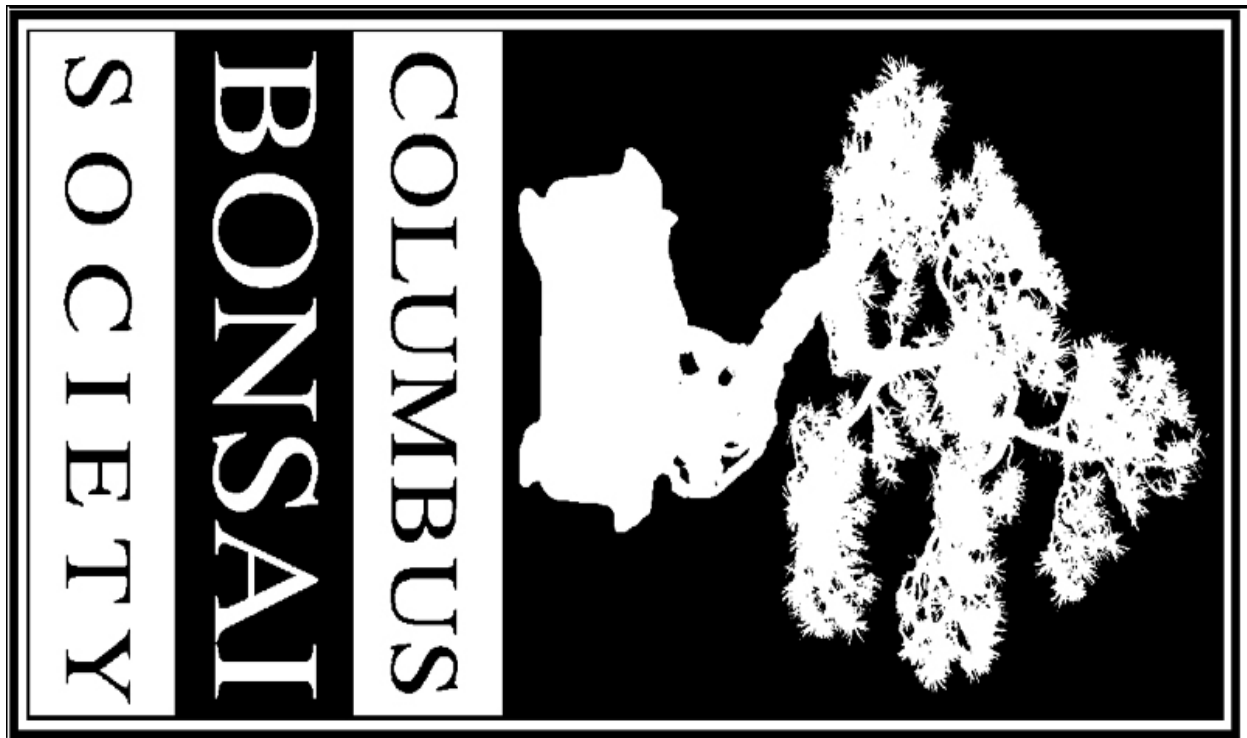
Renewal Memberships may be paid for more than one year at a time.

Bonsai Here and Beyond the Outerbelt

Unless otherwise noted, The Columbus Bonsai Society meets the third Sunday of every month at 1:45 pm at the Franklin Park Conservatory. Board Meetings are the first Tuesday of the month at 7:00 pm. The board meetings are open to members.

19 JUL 2009	GROUP PLANTING WITH JOSE'
19 JUL 2009	NOVICE CLASS 12:30P—1:45P
14-15 AUG 2009	CHICAGO-MIDWEST BONSAI SHOW
16 AUG 2009	BYOT- TROPICAL REFINEMENT – “Bring your tree to talk about plans”
THURSDAYS SEPT	BONSAI & BELLINIS-COCKTAILS @ THE CONSERVATORY
20 SEP 2009	PICNIC—MEMBER SALES-RAFFLE/DOOR PRIZES
29 SEP 2009	CRAIG COUSSINS AT staselwoodBONSAI, NEWARK, OH
30 SEP 2009	CRAIG COUSSINS WORKSHOP—BYOT
10-11 OCT 2009	“Show of the Carolinas” NORTH CAROLINA ARBORETUM
10-11 OCT 2009	OAKLAND NURSERY FALL FESTIVAL
18 OCT 2009	PINES, CARVING-FRANK MIHALIC DEMO/ WORKSHOP
18 OCT 2009	NOVICE CLASS 12:30P—1:45P
15 NOV 2009	INDOOR LIGHTING AND WINTER CARE
15 NOV 2009	NOVICE CLASS 12:30P– 1:45P
13 DEC 2009	HOLIDAY DINNER- TBD
JUN 2010	NATIONAL BONSAI EXPOSITION
JUN 2010	MABA SHOW—MICHIGAN
JUN 2011	ABS LEARNING SEMINAR—LOUISVILLE, KY

PLEASE NOTE THE DECEMBER 13TH DATE FOR THE HOLIDAY DINNER– Hold the date! Plans will be announced related to our Holiday Dinner. We need your input. Do you want a presentation - perhaps on Ikebana? - a gift exchange? a slide presentation?, White Elephant/silent auction?



Columbus Bonsai Society
PO Box 1981
Columbus, OH 43216-1981

Questions to:
Columbusbonsai@hotmail.com
[HTTP://Columbusbonsai.org](http://Columbusbonsai.org)

Regular Club meetings on
3rd Sunday of the month
Meetings Start at 1:45 pm
All are welcome to attend

CBS meets at:
Franklin Park Conservatory
1777 East Broad St
Columbus, Ohio 43203

CBS Board meets
1st Tuesday of the month
at 7:00 pm