

March 2013 Newsletter

President
Zack Clayton

Tree Curator
Dan Binder

Director Emeritus
José Cueto

1st Vice President
Ken Schultz

2nd Vice President
Denny Sackett

1 year Director
Ben William

2 year Director
Mike Thornhill

3 year Director
Jack Smith

Past President
Mark Passerello

Treasurer
Richard Gurevitz

Secretary
Sandy Schoenfeld

Librarian
Beverlee Wilson

Web Master
Ed McCracken

Newsletter Editor
Richard Uhrick

Education
Tom Holcomb

“A Pinch of this....”

...Scions, Sticks, and Stocks, Oh my....

THE BEE’S KNEES

Well, March is finally here, time for all good bonsai artists’ thoughts to turn to spring; right? Maybe it the weather is not permanently warm yet, but we can dream, can’t we? Still it is finally time to begin two of our new events; The First Annual Spring Event [SEE PAGE 5] and the First meeting of the Bonsai Bee [SEE PAGE 2]. So join us early or join us after lunch, but be sure to join us.

Also, you might notice a change in the officer list under 2 year Director, Tracey Freeland who did hold this position recently had to step down due to a promotion at work. Mike Thornhill has graciously agreed to step in and fill this role. Many thanks go to both Tracy and Mike for their willingness to serve on the board. Also, congratulations go to Tracy for his promotion.

Bonsai=Perseverance



Rich Uhrick

**See you on this Sunday the
17th at Franklin Park
Conservatory—Downstairs
in the Classrooms**



Inside this issue:

Program Info	2
Book of the Month	4
SPRING EVENT	5
CBS 2013	6
Library	7
Calendar of Events	8

Columbus Bonsai Society PO Box 1981 Columbus OH 43216-1981

ColumbusBonsai@hotmail.com www.ColumbusBonsai.org



Columbus Bonsai is a proud member of the American Bonsai Society and Bonsai Clubs International.

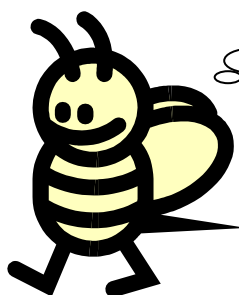
This Month's Program— SPRING EVENT 10 am—3pm With BONSAI BEE after lunch—FPC

Some societies put together soil, others hold public demonstrations; well we will be doing it all. But we are starting off a new FUNdraising event . month. We will be attempting to pot, and initial style up to 100 trees. Trees that will be for sale at events such as the Arbor Day event at Dawes Arboretum. See page 5 for more information.



And just when you think you are having too much fun...Stick around because after lunch we will be beginning another new opportunity to work on your trees or be able to get your questions answered about your trees. Or even if you just want to have others to bounce ideas off of here comes the BONSAI BEE. So, bring a tree to work on for a while before you go back to work on trees for the society. Or just bring your questions and join in the camaraderie!

I SURE CAN'T WAIT
TO JOIN ALL OF THE
OTHER BEES
WORKING ON BONSAI!



The Columbus Bonsai Society receives meeting space and other support and assistance from Franklin Park Conservatory and Oakland Nurseries

UPCOMING PROGRAMS:

APRIL: SAIKEI DEMO

**MAY: BOXWOOD DEMO AND
MINI SHOW**

JUNE: WILLIAM VALVANIS

JULY: ANNUAL SHOW

**SEE PAGE 9 FOR MORE
DATES AND LISTINGS**

DISCLAIMER

The Columbus Bonsai Society Newsletter, is the intellectual property of the Columbus Bonsai Society. All Rights Reserved. No part of this publication may be reproduced in any form, or by any means —electronic, mechanical, photocopying, recording or otherwise — without permission in writing from the Editor.

Rich Uhrick, Editor
ruhrick@otterbein.edu

AND NOW A WORD FROM OUR PRESIDENT....



Random Thotz - now from the President

The busy season is upon us. Buds are swelling on just about everything. Maples, elms, pines, cotoneaster, privet, and a whole lot more. They are not ready to strike cuttings yet, but they will be soon. I have a couple of trees that have nice branching characteristics that I will be saving all my cuttings from. One thing I have noticed is that these clones tend to behave alike. That is, cuttings from the same tree will tend to bud out and break at the same time, and they will turn in the fall very close to each other. This is an advantage for grove and forest plantings. You can get a uniform look across the grouping instead of a bunch of different trees behaving like individuals. I have a red maple that I have been training as a “sumo” trunk and this year it will be donating a bunch of cuttings to a future forest.

Now is the time to get your cutting containers ready to grow. I have the best luck with the fines from Turface, calcined clay which is a uniform sand size or builders sand with the dust removed works well too, and it is just a lot heavier. I use a liquid or gel rooting solution from one of the indoor garden shops. There are two on Indianola a couple of blocks apart just south of Morse Road in Columbus. The liquid is diluted for dipping and the gel can be used straight. I don’t notice a difference between them yet, but it does seem to improve my success rate.

For containers I have used restaurant bus trays, under bed storage containers, deep plastic bins, and utility trays. I like the underbed storage trays with wheels best for use on my benches. The deep bins can develop a mold on the cuttings that the shallow containers don’t have a problem with. The prep for the container is simple, drill or cut drainage into the bottom of the container and line it with landscape cloth to hold the growing medium in water it and pre poke the holes for the cuttings in the damp media. Put it where it will drain freely, that is why I like the wheels. Those open grate plastic shelves work well too for flat bottoms. Mist after planting and check daily. The Turface gives you a visual clue that more water is needed, the sand you have to finger to check.

I have started repotting. Nothing spectacular yet, just some trees from utility pans into single plastic training pots, but there it is. One thing to keep in mind if you grow out several trees in a common pan, if you miss repotting them for a year or two, the roots really entangle. I spent a lot of time teasing out roots or cutting through larger ones that just didn’t fit into the new pot. I will be getting a lot of the plastic drain trays this year for training pots.

I haven’t started repotting any of my trees in display pots yet; I am willing to risk the trees in training, but not my show trees if the weather turns cold again. I have enough that I need to start now, and as I have said before, “The best time to work on your trees, is when you have time to work on your trees.”

Get out there and start checking if you haven’t yet.

Zack

A Call for Moss

We have some workshops planned for March and April where it would be a nice addition to have moss to make the plantings look more finished. As some of you may live where you can find moss easily; CBS is hoping that you would be willing to gather a flat or bag of it and bring it to the next few meetings. Then we can provide moss to the workshop participants and Jose’ to use on the Saikei planting in April.. Thank you.

Book of the Month: Japanese Gardening and Growing Bonsai By Charles Cheshire and Ken Norman

Some of you may recall *Growing Bonsai: a Practical Encyclopedia* a large sized book by Ken Norman published in 2005. Well this book is a compilation of that book and Japanese Gardening by Charles Cheshire. If you have the original Growing Bonsai book you can flip, page for page and find the same photographs and text, the only difference is that the compiled book is half the page size, so the photographs and text are smaller. There may be a larger version of Japanese Gardening by Charles Cheshire out too, but I have not seen it.

If your dream includes displaying your bonsai in an authentic Japanese Garden, then this may be the book for you. The Japanese Gardening book leads the inspired gardener through the various items that comprise a Japanese garden. The first chapter covers some history and the influences of Buddhism and Tea Garden Ceremonies. There is a discussion of natural landscape and the mountainous topography of Japan, and yet the precise placement of plants and stones are important. The Shinto religion brought red Torii gates, a common feature to define the entry to a garden.

Of utmost importance is the selection and use of plant material to highlight the four seasons. Spring – flowering trees, vines and azaleas; Summer – hydrangea, and water with lotus in blossom and the mountains; Fall- Japanese maples for their foliage color and Winter – bamboo, pine and cedars. Gardens without water may have sand or fine gravel raked to simulate waves.

Architectural Structures use natural elements such as bamboo or reeds and wood may be rough sawn. Bridges may be painted bright orange. Pillars support roofs. A teahouse may feature sliding paper doors and reed roofs held up by rough sawn pillars. Remember to develop layers of interest for the eye and incorporate borrowed scenery from beyond your garden.

The next chapter feature garden styles beginning with “Pond gardens”. Select the lowest part of your yard to place your pond so that it appears most natural. Make its edges look natural. If possible, incorporate a stream that fills your pond. Rocks selected and used only to perfect the natural setting.

“Dry Gardens” may appear odd to the American eye since they feature fine gravel or coarse sand to simulate water. The plants and rocks used on the edges or as islands in your gravel sea. Periodic weeding and raking will be required to maintain its appearance,

though my personal note is that a pond requires a lot of maintenance too.

“Tea Gardens” A room in your house may serve as your teahouse if there is not room in your yard for one. They feature steppingstones, lanterns, and water basins. The path is indeed one of the most important features.

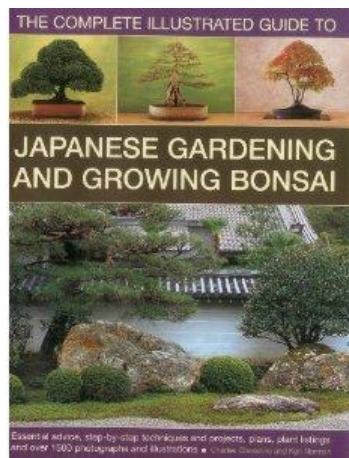
“Stroll gardens” Usually they are large with paths to wander down, but a path can wander around your pond or your teahouse. Streams, rocks to view, lanterns, specimen trees (bonsai) as well as Newari (Japanese topiary) serve this purpose.

“Courtyard gardens” are ideal for small spaces and German Village. Instead of borrowed vistas or views, the walls of buildings or fences are used to frame the Dry garden, Pond garden or pathways. When we visited Japan in 2008, these small gardens were everywhere, each one a pleasure to discover.

The remainder of the Japanese Garden portion of this book features selection of materials, their placement, and construction. For example, choosing rocks and boulders, paving and stepping stones, sand grit, gravel, and slate.

Construction includes “Making a dry waterfall & stream”. Streams, waterfalls and Ponds is a significant chapter in the garden book, I cannot do it justice by trying to provide a tidbit. It presents Topiary, Plants, Path styles, Teahouses and Boundaries. I spent a lot of time studying the two pages on “Making a tea-path gate”. Such a gate may be free standing and act to separate areas using bamboo or other natural material. Bridges and lighting were next.

Finally, I reached the “Creating a Garden” section where assembly of all the individual elements into a garden of your own design occurs. Each one of the garden types presented earlier has a corresponding “how-to” make your own as well as sections on ponds, paths, waterfalls and placing stones and lanterns. The final part of the Japanese Garden book is a plant directory that you should use by season and plant type .



Ken Schultz

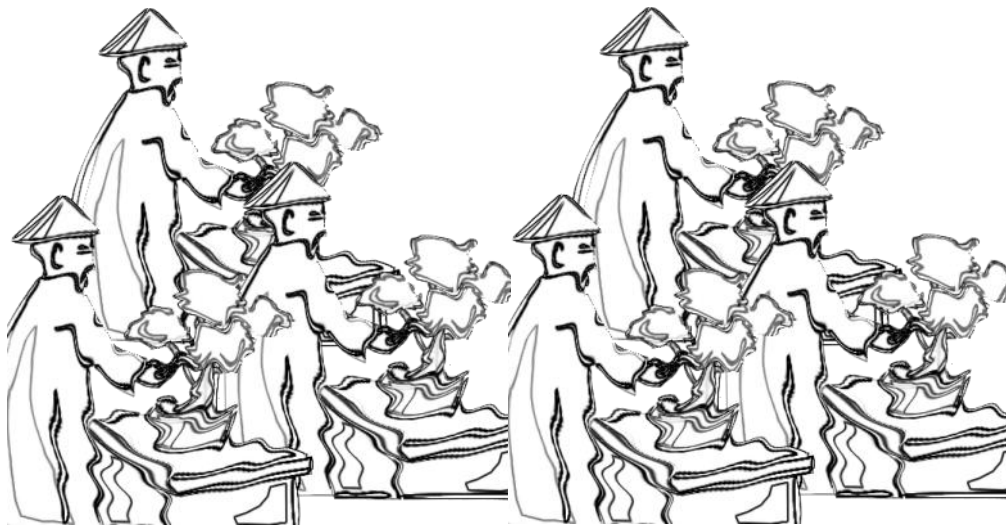
CBS MEMBERS SPRING EVENT, March 17th, 10 am to 3 pm Franklin Park Conservatory.

Think of our meeting this month as a benefit of membership. Any current (even brand new member) can come to the meeting Sunday morning at FPC and stay all day (or any part of the day) and work on trees for as long as you want, this is the "all you care to eat" of bonsai workshops. The club has purchased the pre-bonsai stock and you get to transform them into bonsai. These are starter plants of several traditional species for bonsai. There will be ceramic pots, wire, screen and bonsai soil all for you to use. **Bring in personalized tools - no doubt tool sharing will occur. There is no workshop fee!** This is a free event however if you create something that you can't live without the artist has right of first refusal for \$12.50 for each plant (and that's just about cost folks). We hope that many trees will find homes that day but bonsai that do not sell Sunday will be sold at a higher price at fund raising events such as Arbor Day (April 27th at Dawes Arboretum) where CBS will have a booth.

We will start Sunday morning with some instructions including chalkboard work on styling suggestions for the type trees we will have. Table captains will help with questions, "Is that your front? No the other front!" And we all should be singing a happy tune as we crank out bonsai with house money. Lunch can be bought for \$5, likely Subway Subs. Come early there may be donuts. There's no doubt this will be a fun bonsai learning environment. While we may repeat this workshop in the years to come there will be only one 1st Annual CBS Spring Event. Don't miss it.



SAMPLING OF POTS AVAILABLE FOR THE SPRING EVENT TREES.



SAVE THE DATE



**40TH ANNUAL BONSAI SHOW
JULY 20-21, 2013
FRANKLIN PARK CONSERVATORY
LOWER LEVEL where admission is
Free!**

**1777 East Broad Street
Columbus, OH 43203
7/20/13 10am—5pm
7/21/13 10am—4pm**

INTRODUCTION TO BONSAI

Columbus Bonsai Society

April 27, 2013 10 am—3 pm

Oakland Nursery—

Columbus Store on Oakland Park

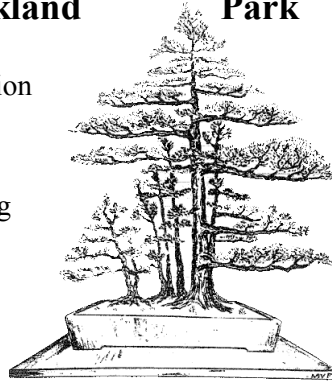
\$45—Space Limited

Registration/ Contact/ Information

Available at:

bonsaibeginners@yahoo.co

[Http://www.columbusbonsai.org](http://www.columbusbonsai.org)



**LOOKING FOR A UNIQUE STAND FOR
YOUR TREE? DID YOU KNOW THE CAPI-
TAL CITY MILLWORK IN WESTERVILLE
SELLS THESE EXOTIC SPECIES SLABS?
WWW.COLUMBUSMILLWORK.COM**

From the Circulation Desk of the C.B.S. Library

The CBS Library Materials List is now available in spreadsheet format on our CBS website's Library Tab.

Users can Sort, Filter and Search the list. There are a few little buttons at the bottom of the embedded spreadsheet that allow you to download the spreadsheet, or open a full page version in a new window. Users can then email the librarian at CBSLibrary@hotmail.com to request materials.

Another new feature is a column indicating if the Book has been reviewed and the information to access the review. For instance "NL Feb. 2011 (Schultz)" would indicate that the review is in the Newsletter, Feb 2011 issue, and Ken Schultz authored the review.

We hope this will make the collection more available to the membership. Let us know your thoughts.

We have completed the Accession Process for all the Books in the Club's Collection. All have a Card and Pocket for ease of Check Out.

Beverlee Wilson, Librarian
John Young, Asst Librarian
CBSLibrary@hotmail.com



P. O. Box 1981
Columbus, Ohio
43216-1981

www.columbusbonsai.org

Columbus Bonsai Society Membership Registration

Name: _____

Address: _____

Phone: (____) _____ -- _____ Date: ____/____/____

Email: _____

Membership: Individual \$25.00 Family \$35.00

Check # _____

May your phone number be included in our members list? Y N

IF family membership, please list other members: _____

Renewal Memberships may be paid for more than one year at a time.

Bonsai Here and Beyond the Outer belt

Unless otherwise noted, The Columbus Bonsai Society meets the third Sunday of every month at 1:45 pm . Board Meetings are the first Tuesday of the month at 6:30 pm. The board meetings are open to members.

2013

17 MAR	SPRING EVENT—FPC 10:30 AM START *****
2 APR	SANDUSKY BONSAI—FLOWERING TROPICALS/ TBA
4 APR	AKRON/CANTON BONSAI—PLANT TREES ON ROCKS FOR PENJING PROJECT
21 APR	SAIKEI DEMO WITH JOSE—FPC
27 APR	ARBOY DAY EVENT —DAWES , NEWARK, OH
27 APR	BEGINNING BONSAI CLASS— OAKLAND
7 MAY	SANDUSKY BONSAI—SHOW PREP WORKSHOP
19 MAY	BOXWOOD DEMO, REPOTTING AND STYLING OF COLLECTED—FPC
JUN	AKRON/CANTON BONSAI—ANNUAL SHOW AND DEBUT OF PENJING PROJECT
8-9 JUN	33RD ANNUAL REGIONAL BONSAI SHOW—DAWES ARBORETUM—NEWARK
8-9 JUN	SANDUSKY BONSAI SOCIETY ANNUAL SPRING SHOW—YACHT CLUB
16 JUN	FOREST DEMO W/ WILLIAM VALVANIS AND MORNING WORKSHOP—FPC
2 JUL	SANDUSKY BONSAI—MONTHLY MEETING, TOPIC TBA
20-21 JUL	CBS 2013—ANNUAL SHOW —FPC
17 AUG	SANDUSKY BONSAI—PICNIC AND GARDEN TOUR
18 AUG	TBA
7 SEP	SANDUSKY BONSAI—ANNUAL PBLIC DEMONSTRATION—FROST CENTER
15 SEP	PICNIC/ MEMBER SALE/ IRON BONSAI—OAKLAND
1 OCT	SANDUSKY BONSAI—SOIL NIGHT AND PIE/ICE CREAM SOCIAL
20 OCT	JIN AND SHARI—FPC
6 NOV	SANDUSKY BONSAI—OFFICER ELECTIONS
17 NOV	RAFT AND CLUMP STYLES W/ FICUS—TBA
4 DEC	SANDUSKY BONSAI—CHRISTMAS PARTY/ DINNER
DEC	HOLIDAY DINNER—TBD

FPC= FRANKLIN PARK CONSERVATORY
OAKLAND= OAKLAND NURSERY, COLUMBUS LOCATION

FROM THE CBS CARE GUIDE

March – Early Spring – 50/31

- Repot deciduous trees if their buds are starting to swell. If you wait until the leaves have emerged, you will need to take more care to keep the tree out of direct sunlight and wind.
- Be sure to check wire from last year. The spring's growth will cause tight wire to cut into the tree. Remove any that is tight. This should be done year round as well. If the branch did not hold its shape, reapply wire.

Columbus Bonsai Society
PO Box 1981
Columbus, OH 43216-1981

Questions to:
Columbusbonsai@hotmail.com
[HTTP://Columbusbonsai.org](http://Columbusbonsai.org)

Regular Club meetings on
3rd Sunday of the month
Meetings Start at 1:45 pm
All are welcome to attend

CBS Board meets
1st Tuesday of the month
at 6:30 pm

SPRING EVENT AND BONSAI BEE—FPC

